

Avocado tree foliage with ALB damage (scorching, yellowing, and browning).



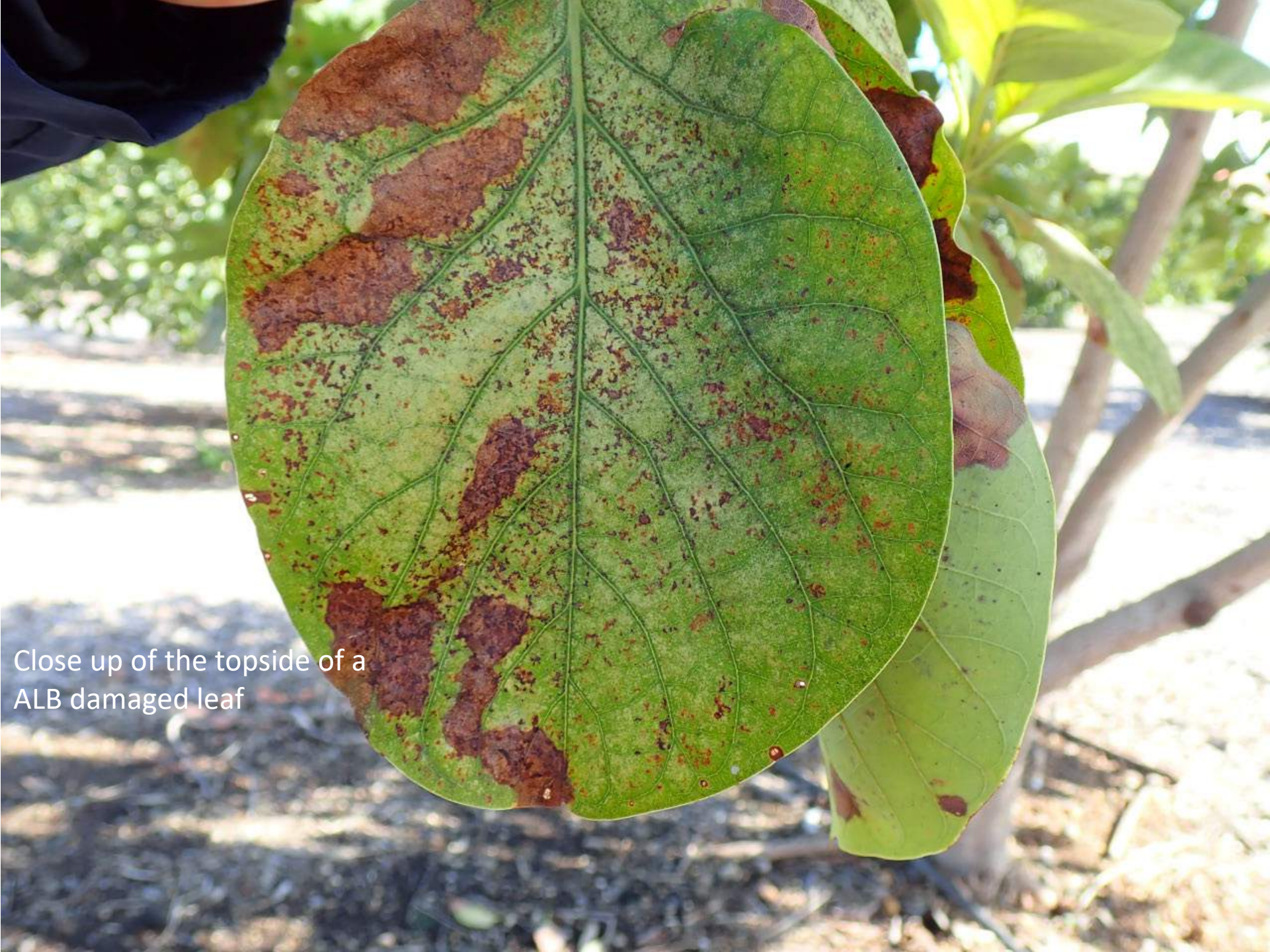
Undersides of infested foliage, black spotting and scorching from center of leaf



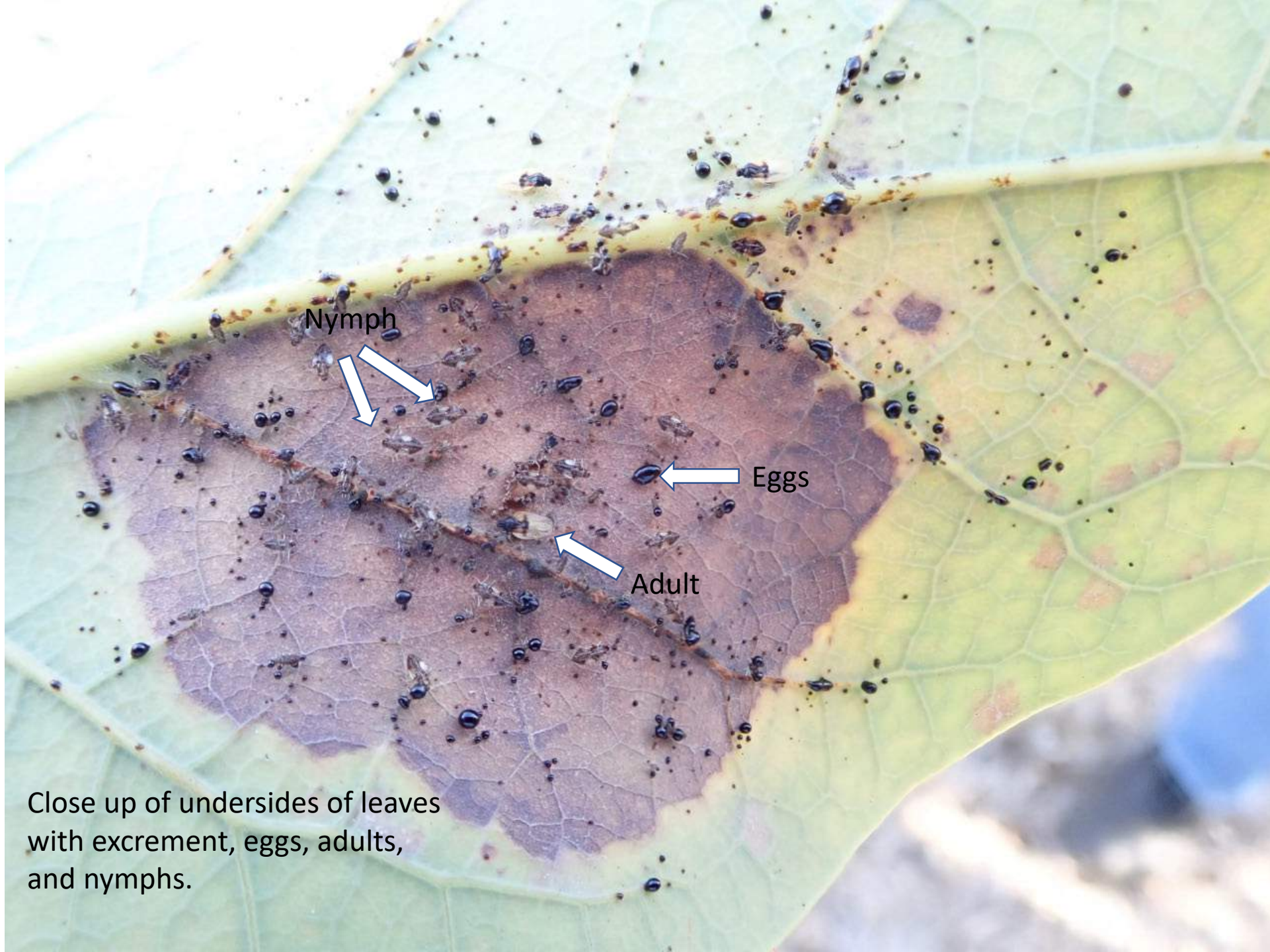
Yellowing and
scorching from
center of leaf, with
black spots







Close up of the topside of a
ALB damaged leaf



Nymph

Eggs

Adult

Close up of undersides of leaves with excrement, eggs, adults, and nymphs.