

Mexican Fan Palm

Washingtonia robusta

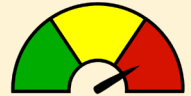


**Do not
plant this
in your yard!**



Mexican Fan Palm is an invasive ornamental tree native to northwestern Mexico. This species is very weedy and spreads extremely easily.

Rats nest in the crown of dead leaves. Birds nest in these palms, eat the seeds, and spread them around.



High Risk

Description:

This invasive palm can grow over 100 ft tall. The Mexican fan palm is self-compatible, meaning it can be fertilized by its own pollen. This species is often found invading gulches.

Flower:

Inflorescence up to 9 ft long, with numerous small pale orange-pink flowers.

FronDs:

Palm fronds can be up to 3 feet long. Frond stems are sharply toothed and can persist for years, hanging on to the crown and creating a "frond skirt".

Fruit:

Spherical, blue black drupe. This tree produces an average of 560,345 seeds.

Impacts and Harm:

- This fast-growing palm can be unstable and potentially topple in high wind.
- The frond skirt is a fire hazard, and creates habitat for rat nests.
- Palms cluster together to form dense thickets.
- Hard to remove once established.

Plant this native instead:



Loulou (Pritchardia martii)